

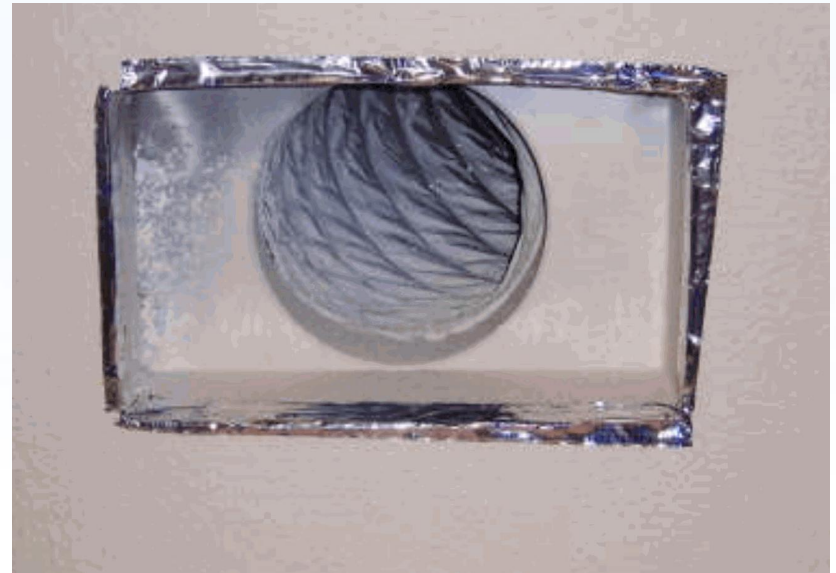
Examples of Poor & “Good” Measure Installations and Inaccurate Reporting

Duct Efficiency

Poor workmanship and incomplete treatment



Entire register properly sealed with tape from inside (mastic and silicone may apply)



Duct Efficiency (cont.)

Joint not properly sealed

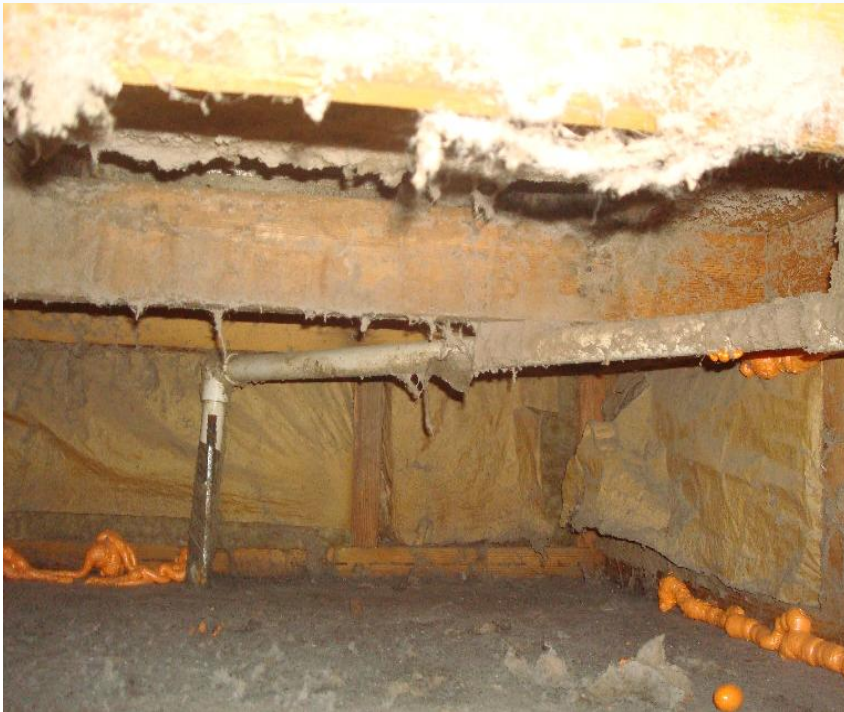


Joint and seams thoroughly sealed



Duct Efficiency (cont.)

Improper and incomplete treatment of the return air chamber



Proper and thorough treatment



Air Infiltration

Sloppy and incomplete application



Proper and thorough application



Air Infiltration (cont.)

No switch plate gasket installed
as reported



Proper switch plate installation



Attic Insulation

Inaccurate reporting of existing insulation level

Accurate reporting and thorough installation

